

BUT
FOOD EQUIPMENT

FOOD
PROCESSING
MACHINERY





肉类

Meats

DS-130, DS-180, DS-300 MEAT SLICER



USAGE

LC-300 Meat slicer combine features of high production ability, high quality and low power consuing togetherh. It is suitable for pork, beef, whole poultry, fat, mixed meat and fish and mutton cutting and processing.

SPECIFICATIONS

MODEL: DS-300

VOLTAGE:380V

POWER: 1.5KW

ABILITY: 800KG/H

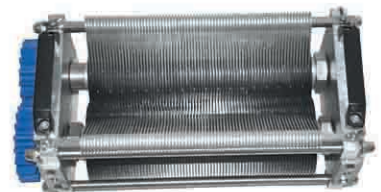
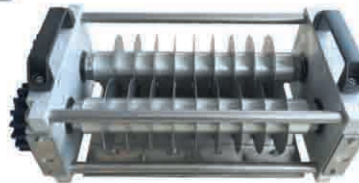
N.W. : 105KG

CUTTING THICKNESS: 3-30MM

DIMENSION: 620X565X956MM

UPPER FEEDING PORT: 170X120MM

BOTTOME FEEDING PORT: 162X75MM



DS-360 MEAT SLICER/STRIPPER

USAGE

DS-360 Meat slicer combine features of high production ability, high quality and low power consuing togetherh. It is suitable for pork, beef, whole poultry, fat, mixed meat and fish and mutton cutting and processing.

SPECIFICATIONS

MODEL: DS-360

VOLTAGE:380V

POWER: 0.75KW X 2

ABILITY: 800KG/H

N.W. : 120KG

CUTTING THICKNESS: 3-15MM

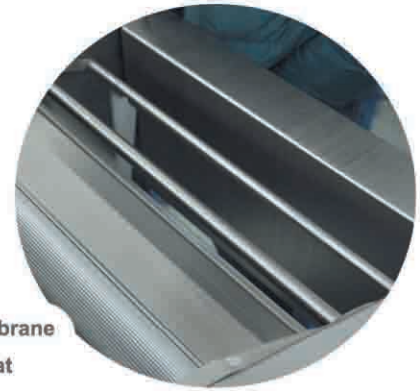
DIMENSION: 610X585X940MM

UPPER FEEDING PORT: 350X180MM

BOTTOME FEEDING PORT: 285X90MM



JM-460 MEMBRANE SKINNER



USAGE

Suitable for derinding membrane and fat of various sizes meat

SPECIFICATION

MATERIAL: SUS 304
DIMENSION: 710X750X900MM
WIDTH: 430MM
SPEED: 37 M/MIN
BLADE SIZE: 445X20X1MM
THICKNESS: 0.2-0.5MM
POWER: 1.1KW
PRESSURE: 0.6-0.8 Mpa
VOLTAGE: 380V
WIGHT: 160KG



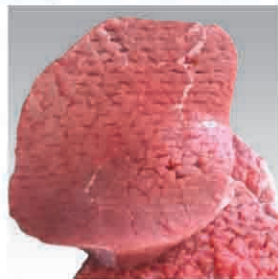
TS-180 TENDERIZER / MEAT SLICER

USAGE

Using high density knife to break material inner membrane in order to break the fibre tissue to get the best tenderize effect and no damage on the shape of material. Suitable for various of meat processing factory, steak processing, western restaurant, central kitchen and meat fine processing.

SPECIFICATION

MODEL: TS-180
VOLTAGE: 220V/380V
POWER: 0.2 KW
WEIGHT: 30KG
DIMENSION: 300X460X650MM



JG-250LM BANSAW

USAGE

Suitable for middle and small size animal bone, frozen meat, fish with bone, frozen fish processing. Bone saw suitable for industrial and various meat food processing factory, steak factory and meat fine processing.

SPECIFICATION

MODEL: JG-250LM

DIMENSION: 570X540X870MM

WEIGHT: 40KG

POWER: 0.75KW

VOLTAGE: 220V

SAW SIZE: 1670MM

CUTTING SIZE: 230-250X170MM



JG-260 BANDSAW(DESKTOP)

USAGE

Suitable for middle and small size animal bone, frozen meat, fish with bone, frozen fish processing. Bone saw suitable for industrial and various meat food processing factory, steak factory and meat fine processing.

SPECIFICATION

MATERIAL: SUS304

DIMENSION: 720X560X1420

WORK PLATFORM: 460X660

PLATFORM HEIGHT: 800MM

CUTTING WIDTH: 220MM

CUTTING HEIGHT: 260MM

BANDSAW SPEED: 18 M/S

BANDSAW SIZE: 2087X16X0.56X4T

VOLTAGE: 380V-3PHASE

POWER: 1.1KW

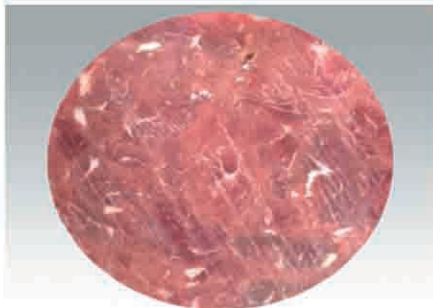
WEIGHT: 115KG.



BANDSAW (FLOOR TYPE)

USAGE

Suitable for middle and small size animal bone, frozen meat, fish with bone, frozen fish processing. Bone saw suitable for industrial and various meat food processing factory, steak factory and meat fine processing.



SPECIFICATION

| MODEL | MATERIAL | DIMENSION (mm) | CUTTING WIDTH (mm) | CUTTING HEIGHT (mm) | SPEED (m/s) | VOLTAGE (v) | POWER (Kw) | WEIGHT (Kg) | BANDSAW SIZE (mm) |
|-------|----------|-----------------|--------------------|---------------------|-------------|-------------|------------|-------------|-------------------|
| 350 | 304 | 895x1000x1760 | 330 | 350 | 28 | 380 | 1.5 | 215 | 2970x16x0.56x4T |
| 400 | 304 | 895x1000x1810 | 330 | 400 | 28 | 380 | 1.5 | 218 | 3070x16x0.56x4T |
| 450 | 304 | 930x1000x1930 | 380 | 450 | 32 | 380 | 2.2 | 245 | 3330x16x0.56x4T |
| 500 | 304 | 930x1000x1980 | 380 | 500 | 32 | 380 | 2.2 | 246 | 3430x16x0.56x4T |

KP-350 HORIZONTAL SLICER



USAGE

Horizontal meat slicer is suitable for fresh meat, cook meat and slightly frozen meat horizontal slicing, for example chicken breast slicing, suitable for industrial and various meat food processing factory, steak factory and meat fine processing.

SPECIFICATION

MODEL: KP-350

VOLTAGE: 220V/380V

N.W.: 400KG

DIMENSION: 1100X1250X1300MM



MEAT GRINDER

USAGE

SYSTEM

CE CERTIFIED EUROPE IMPORTED SIEMENS MOTOR
DRIVE FORMAT: DIRECT DRIVE, NO BELT AND CHAIN, BIG TORQUE
MATERIAL: SUS304
SURFACE: SAND BLASTING, AVOID SIGHT FATIGUE
HOLE PLATE: SWEEDEN BRAND: LICOSWISS
BLADE: GERMANY IMPORTED
MOTOR OVERLOAD AUTO STOP AND AUTO RECOVERY
COMPARISON OF 3 PLATES AND 2 BLADES GRINDER AND SINGLE PLATE AND BLADE TYPE
SINGLE PLATE AND BLADE TYPE: BIG OBSTRUCTION FORCE, HIGH TEMPERATURE RISING, BREAK MEAT FRESH.
THREE PLATE AND TWO BLADES TYPE: ADOPT BIG, MIDDLE AND SMALL HOLE PLATE CUTTING, SAVE ENERGY AND TIME. KEEP MEAT FRESH

SPECIFICATION

DIMENSION: 1040X540X980MM

N.W.: 160KG

PWER: 4.2KW

VOLTAGE: 380V 3 PHASE

CUTTING SIZE: 3,4,6,8 (OPTIONAL)

ABILITY: 500-700 KG/HR



HYQR-32 MEAT SLICER



FEATURES:

1. Aluminum-magnesium alloy body, good thermal resistance, surface deep polished, explains perfect look.
2. Polished anodized surface, resistant to grease and will never rust, so as to ensure outlook smooth and clean.
3. Install casters on the bottom of the machine and load-bearing base (retractable), machines running smoothly and easy movement.
4. Customizable, can be customized by the client using places and environment, available in 220V and 380V voltage selection.
5. Imported blades, fast speed; high slicing ability, quality and durability.

SPECIFICATION

DIMENSION: 780X560X736MM

WEIGHT: 90KG

POWER: 1100KW

ABILITY: 42 SLICE/MIN

THICKNESS: 0-12MM

BLADE SIZE: 320MM

VOLTAGE: 220V/380V, 50HZ

HYQR-350G MEAT SLICER

SPECIFICATION

DIMENSION: 1020X700X1410MM

WEIGHT: 186KG

POWER: 1500W

CAPABILITY: 0-16MM

BLADE SIZE: 363MM

VOLTAGE: 220V/380V, 50HZ



DQ-420 FROZEN MEAT CUTTER



SPECIFICATION

DIMENSION: 2340X740X1465MM

WEIGHT: 280KG

CUTTING SIZE: 160MM(WIDTH) 40-90(HEIGHT) 450MM(LENGTH)

CUTTING THICKNESS: 0.5-30MM

CAPACITY: 60-260 SLICES/MIN

RECOMMEND TEMPERATURE: -2~4 CENTIGRADE

LOWEST TEMPERATURE: -10 CENTIGRADE



QR-340 CONVEYOR MEAT SLICER

SPECIFICATION

VOLTAGE: 380V

POWER: 0.75KW

KNIFE SET QUANTITY: 1 SET

MAX CUTTING HEIGHT: 50MM

THICKNESS: 3-30MM

WEIGHT: 159KG

DIMENSION: 1734X649X1424MM



KP-21



USAGE

Chop cutter is widely used in meat processing factory, home steak production, fresh product supermarket meat processing and different sizes central kitchen production. Suitable for boneless meat, cooked meat, fish, cheese.

SPECIFICATION

MODEL: KP-21
 DIMENSION: 1860X800X1105MM
 POWER: 2.95KW
 VOLTAGE: 380V 50HZ
 MATERIAL SLOT: 700X210X230MM
 THICKNESS: 1-700MM
 N.W.: 350KG
 MIN TEMPERATURE: -5 CENTIGRADE
 SPEED: 210 R/MIN
 CAPABILITY: 200PCS/30MM

D-350 DICER

Features:

1. Whole machine adopts food grade 304 stainless steel, low lead content, long service life, food safety.
2. Thickness adjusting device, can be adjusted by customer demand
3. Multi-function, slicing, dicing, different section size. Cost effective.
4. Imported blades, high speed, strong ability, wear well.
5. Safety control system, micro inching button at the outlet position. effectively protect operator's safety.
6. Water washing surface, easy uninstal and clean.
7. Suitable for whole block of slightly frozen meat, combined meat slicing, strippin and section cut.



Specification

| MODEL | DIMENSION (mm) | POWER (KW) | VOLTAGE (V) | CAPABILITY (Kg/h) | INLET SIZE (mm) | CUTTING SIZE (mm) |
|--------|----------------|------------|-------------|-------------------|-----------------|-------------------|
| LC-350 | 1350*700*1000 | 2.8KW | 380V | 600 | 84*84*350 | (5-20)mm |
| LC-550 | 1810*1000*1050 | 2.95KW | 380V | 800 | 120*120*550 | (5-20)mm |



CDV-380 CDV-360 SUSTAINABLE FEEDING CHOP CUTTER



USAGE

Slicing/chop cutting machine is a cutting device for high-precision meat products. It mainly cuts the frozen meat, fish, cheese, bacon, sausage and other raw materials into the pieces of meat that the user needs. Change to teeth blades can also cut the bone-like frozen meat into pieces or segments, which is a high High-efficiency meat slicer for catering and distribution companies, hotels, schools, central kitchens, meat processing plants, etc.

SPECIFICATION

Model: CDV-280 / CDV-360

Power: 5.5kw / 7kw

Voltage: 380v 50hz or customizable

Capacity: 120-290 cuts/min / 160-320 cuts/min

Cutting Thickness: 1-50mm

Dimension: 2490x1090x1440 mm / 2600x1300x1700 mm

Weight: 1200kg / 1600kg

Cutting temp.: -6°C~0 °C

CD-300 CD-440 CD-500 FROZEN MEAT DICER

Features:

1. Advance knife set installed and uninstal device
2. Uninstall knife set without tools
3. Clean with high pressure water gun, easy cleaning
4. Safety device
5. Sensor type auto cut off of electricity.

Specification

Model: CD-300/ CD-440/ CD-500

Power: 7KW / 14.5kw / 11.5kw

Voltage 380 50HZ or customizable

Capacity 300-500 kg/h / 1000-2000 kg/h / 900-1500kg/h

Cutting range: 4-10mm (slice, strip, dice)

4-20mm (slice, strip, dice) 4-20mm (slice, strip, dice)

Frozen meat temp.: -10~0 °C

Drum size: 300mm / 440mm / 500mm

Weight: 350kg / 1500kg / 1000kg

Dimension 1410x760x1208mm 2100x1300x2100mm 1630x1260x1840 mm



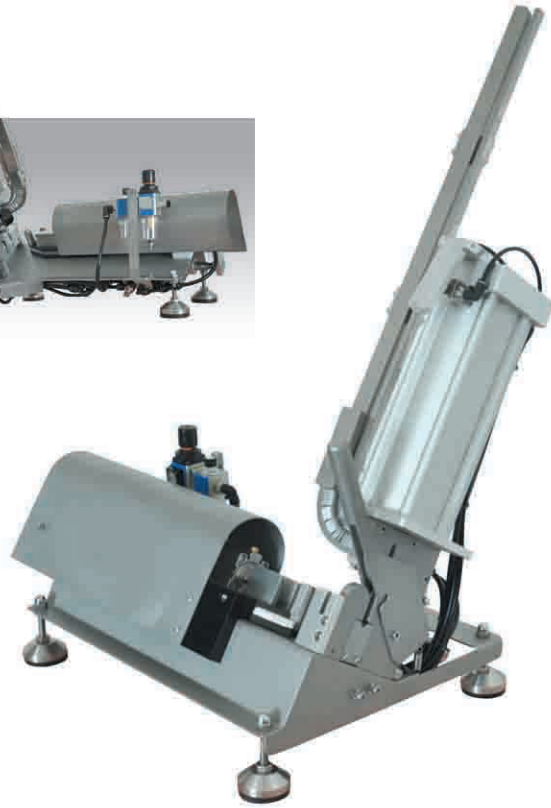
PNEUMATIC CLIPPER

USAGE

Suitable for pork, beef and mutton roll forming, sausage casing clips.

SPECIFICATION

MODEL: DK-U810
AIR PRESSURE: 0.4-0.6MPa
CLIP SIZE: U801, U810
CASING DIAMETER: 70-140MM
FREQUENCY: 10-12 TIMES/MIN
N.W.: 28KG
DIMENSION: 900X420X830MM



DESKTOP PNEUMATIC STUFFER

SPECIFICATION

AIR PRESSURE: 0.4-0.6
DIMENSION: 1735X340X350MM
N.W.: 41KG
SLOT LENGTH: 600MM
FREQUENCY: 10-12 TIMES/MIN



FLOOR TYPE PNEUMATIC STUFFER 600



USAGE

Suitable for meat roll forming, sausage filling, fragment meat filling processing. Mutton roll, pork roll, pork steak reforming.

SPECIFICATION

Air pressure: 0.4-0.6 MPa

Dimension: 1860x580x1430mm

N.W.: 163 Kg

Slot length: 600mm

Frequency: 10-12 times/min



BOWL CUTTER

USAGE

High speed blade chop the meat into meat mud, also can mixing meat, auxiliary material and water together.

SPECIFICATION

CAPABILITY: 300KG/H
BLADE SPEED: 1440 R/MIN
BOWL SPEED: 12R/MIN
POWER: 1.5KW
VOLTAGE: 220V
N.W.: 125KG



DERINDER BP-435

USAGE

Meat processing factory, pork processing factory, butchere, central kitchen adn distribution center

SPECIFICATION

DIMENSION: 750X710X880MM
WEIGHT: 105KG
POWER: 750W
VOLTAGE: 380V
SKINNING THICKNESS: 0.5-6MM
CAPABILITY: 18M/MIN



120 COOKED MEAT SLICER



USAGE

Suitable for grilled meat, various cooked meat, sausage, to cut into strips, slices. Used in industrial and various size meat processing factory, fast food restaurant, big canteen, meat fine processing factory for cooked meat processing.

SPECIFICATION

DIMENSION: 1330X630X1250MM

WEIGHT: 165KG

POWER: 1.1KW

VOLTAGE: 380V

SLICING SIZE: 1-10MM

CAPABILITY: 500KG/HR



KP-120 CONVEYOR TYPE RIB CUTTER

USAGE

Cut ribs into blocks, suitable for restaurant, meat factory, supermarket and meat market processing and food processing factory

SPECIFICATION

MODEL: KP-120

DIMENSION: 800X580X125MM

WEIGHT: 100KG

POWER: 2.25KW

VOLTAGE: 380V 50HZ

INLET SIZE: 120MM

CAPABILITY: 500-800KG/H

CUTTING SIZE: 10-30MM



140 COOKED MEAT SLICER



USAGE

Suitable for grilled meat, various cooked meat, sausage, bacon to cut into strips, slices. Used in industrial and various size meat processing factory, fast food restaurant, big canteen, meat fine processing factory for cooked meat processing.

SPECIFICATION

DIMENSION: 1500*625*1050mm

WEIGHT: 175KG

POWER: 1.5KW

VOLTAGE: 380V

SLICING SIZE: 2-120MM

CAPABILITY: 600KG/HR



QR-300K CONVEYOR TYPE RIB CUTTER

USAGE

Cutting fresh meat into slice, strips.

SPECIFICATION

MODEL: QR-300K

DIMENSION: 800x550x570 mm

WEIGHT: 85KG

POWER: 750W

VOLTAGE: 380V 50HZ

Thickness: 3-30MM

CAPABILITY: 300KG/H



JG-6045 AUTOMATIC BONE SAW



SPECIFICATION:

DIMENSION: 1350X1850X1700MM
VAOLTAGE: 380V 50HZ
POWER: 4KW
CUTTING SIZE: 590X450X150MM
CUTTING THICKNESS: 5-80MM
CAPACITY: 8-18 TIMES/MIN



JG-600RF BONE SAW

SPECIFICATION

DIMENSION: 1345X1390X2240(FLAT PLATFORM) 1290X1375X2240(SLIDING PLATFORM)
WORKING PLATFORM SIZE: 950X1195MM(SLIDING TYPE) 1295X1205MM(FIXED TYPE)
PLATFORM HEIGHT: 920MM(SLIDING TYPE) 880(FIXED TYPE)
CUTTING WIDTH: 600MM
CUTTING HEIGHT: 600MM(SLIDING TYPE) 640MM(FIXED TYPE)
SAW SPEED: 19M/S 32M/S
BANDSAW SIZE: 4765X19X0.56X3T
VOLTAGE: 380V
POWER: 7.5KW
WEIGHT: 640(SLIDING TYPE) 645(FIXED TYPE)





蔬果类

Vegetables

D-120 MULTI-FUNCTION VEGETABLE CUTTER



USAGE

Cutting leaf type vegetable and bulbous type vegetable into slices, strips, dices.

USING RANGE

Supermarket, agricultural production enterprise, Chinese cuisine enterprise, entral kitchen and group meal company

SPECIFICATION

DIMENSION: 1160X530X1000MM

WEIGHT: 135KG

POWER: 1870W

VOLTAGE: 220V/380V

CUTTING SIZE: STRIP/SLICE STANDARD 3MM

DICE: (8, 10, 12, 16, 20)MM

CAPABILITY: 300-1000KG/HP

BELT WIDTH: 120MM



YC-120 LEAF TYPE VEGETABLE CUTTER

USAGE

Cutting leaf type vegetable and melon type vegetable into slice, strips and tiny fragment.

SPECIFICATION

DIMENSION: 1000X8000X1200MM

WEIGHT: 130KG

POWER: 1100W

VOLTAGE: 220V

CUTTING RANGE: 1-60MM

CAPABILITY: 800-1500KG/H

BELT WIDTH: 120MM



D-140 MULTI-FUNCTION VEGETABLE CUTTER



USAGE

Cutting leaf type vegetable and bulbous type vegetable into slices, strips, dices.

USING RANGE

Supermarket, agricultural production enterprise, Chinese cuisine enterprise, entral kitchen and group meal company

SPECIFICATION

DIMENSION: 1400*685*1050mm

WEIGHT: 190KG

POWER: 2.5KW

VOLTAGE: 220V/380V

CUTTING SIZE: LEAFY 1-60MM, Root slice 2-6mm

Strip 2-6mm DICE: (8, 10, 12, 16, 20)MM

CAPABILITY: 600-1000KG/H

BELT WIDTH: 140MM



YC-140 LEAF TYPE VEGETABLE CUTTER

USAGE

Cutting leaf type vegetable and melon type vegetable into slice, strips and tiny fragment.

SPECIFICATION

DIMENSION: 960*620*1050mm

WEIGHT: 135KG

POWER: 1.6KW

VOLTAGE: 380V

CUTTING RANGE: 1-60MM

CAPABILITY: 300-500KG/H

BELT WIDTH: 140MM



YC-200 VEGETABLE CUTTER



USAGE

Cutting leaf type vegetable into slice, strip, sections and tiny fragment

SPECIFICATION

DIMENSION: 600X500X900MM

WEIGHT: 70KG

POWER: 750W

VOLTAGE: 220V

CUTTING SIZE: STRIP/SLIC STANDARD 3MM

CAPABILITY: 200-1000KG/H



FRUIT AND VEGETABLE DICER

SPECIFICATION

DIMENSION: 800X700X1300MM

CUTTING RANGE: 3-20MM

WEIGHT: 85KG

CAPABILITY: 500-800 KG/H (10MM CARROT DICES)

VOLTAGE: 380V

POWER: 1.5HP



MSH-1000 BRUSH WASHING AND PEELING MACHINE

USAGE

Suitable for bulbous vegetable washing and peeling.

USING RANGE

Supermarket, clean vegetable distribution,
farm product market, group meal
enterprise etc.

SPECIFICATION

MODEL: MSH-1000

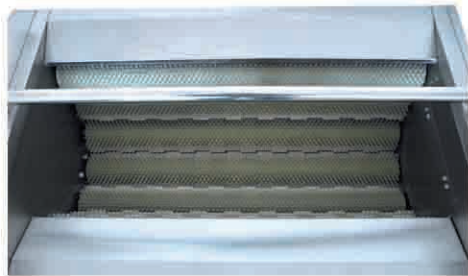
DIMENSION: 1300X720X1050

VOLTAGE: 380V

POWER: 750W

CAPABILITY: 400-500KG/HR

WEIGHT: 150KG



Multi layer sorting conveyor



Brief introduction

Single layer, double layer and tripple layer are available, can be customized
Used for fruit and vegetable sorting and cutting process.
Configured with belt tenioning device, easy adjust, uninstal and clean.
Conveyor adopt food grade PVC material.
Whole body adopt SUS304 material except for motor and electrical parts.

Specification

DIMENSION: 6100X1400X2000MM
VOLTAGE: 380V(220V-480V CUSTOMIZABLE)
POWER: 2.25KW
WORKING PLATFORM NO.: N
PLATFORM NO.: 500X330MM



SIX POSITION SORTING PLATFORM

BRIEF INTRODUCTION

(FOUR POSITION SORTING PLATFORM/SIX SORTING PLATFORM)
USED FOR FRUIT AND VEGETABLE PRIMARY SORTING, CUTTING PROCESS.
PLATFORM AND TABLE PLATE REMOVABLE DESIGN, CONFIGURED WITH WASTE COLLECTION DEVICE.
WORKING POSITION NUMBER CAN BE CUSTOMIZED.
WHOLE BODY ADOPT SUS304, SAND BLASTING PROCESSING EXCEPT FOR MOTOR AND ELECTRICAL PARTS.

SPECIFICATION

DIMENSION: 2685X1020X1575MM
VOLTAGE: 380V(220V-480V/ CUSTOMIZE)
POWER: 0L74KW
INLET HEIGHT: 1410MM
OUTLET HEIGHT: 800MM
TABLE PLATE SIZE: 470X345MM



The background of the entire page is a grayscale illustration of several interlocking gears of various sizes. The gears are rendered with a metallic, reflective texture, showing highlights and shadows that give them a three-dimensional appearance. They are arranged in a way that suggests a complex mechanical system. In the top right corner, the company logo is displayed.

BUT
FOOD EQUIPMENT

TIANJIN BUT MACHINERY EQUIPMENT CO., LTD.

ADD.: Zhouliang street, Baodi District, Tianjin, China

Email: sales@tsbut.com/george.han613@gmail.com

Web: www.tsbut.com/food-machinery

Mobile: +8618733331582 (wechat/whatsapp)